

**WASP<sup>®</sup> DT**  
*Daniela Triva*

WALK-AWAY SPECIMEN PROCESSOR

**REDEFINING THE FUTURE OF AUTOMATED SPECIMEN PROCESSING**



[COPANUSA.com](http://COPANUSA.com)



[facebook.com/COPAN.USA](https://facebook.com/COPAN.USA)



[@COPANUSA](https://twitter.com/COPANUSA)



800.216.4016

COPAN Diagnostics, Inc. • 26055 Jefferson Avenue • Murrieta, CA 92562 USA





## What is WASP®DT?

**WASP®DT: WALK-AWAY SPECIMEN PROCESSOR** is a solution for preanalytical Microbiology. It is an open platform, modular instrument, and the only one in its field which addresses all aspects of automated Microbiology specimen processing: planting and streaking, Gram slide preparation, and enrichment broth inoculation to name a few.

WASP®DT is not a closed box that requires the Microbiology lab to adapt to it. WASP®DT is an extension of the laboratory professional. It allows the freedom to walk away from specimen set up and focus on high level tasks. Most importantly, WASP®DT is what Microbiologists asked for in their automation (we know because we asked them). WASP®DT is a direct reflection of what we stand for at COPAN: Innovating Together.



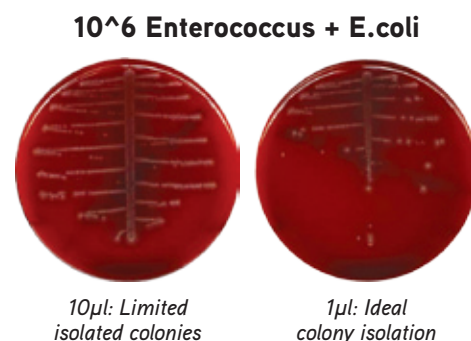
# WASP®DT: Walk-Away Specimen Processor

## Traditional Reusable Loops. Why Would Anything Else Be Considered?



**MICROBIOLOGY LABS** have always used traditional loops. Seeing no point in trying to change what has always worked, WASP®DT uses reusable metal loops ranging in size from 1µl, 10µl and 30µl. Other automated systems use pipet tips which cannot transfer volumes less than 10µl, and the difference is clear.

Automated specimen processors that use a pipetting system can clog when the sample is viscous or has particulate matter.



Continuous and random loading



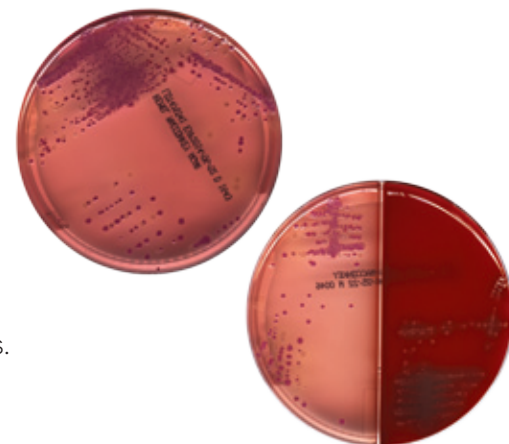
Automatically switch between 1µl, 10µl or 30µl loop

## Walk Away System – Really, You Can Walk Away!

**WHILE THE SYSTEM IS A LOT OF FUN TO WATCH**, the WASP®DT loop and tool change system allows it to automatically switch between 1µl, 10µl or 30µl loop depending on specimen type, without user intervention and increasing walk-away time. Samples can be loaded continually onto the instrument without batching and the container grippers and decappers adjust automatically to any specimen container type. All you have to do is load, and walk away (unless you want to stick around to watch the magic)!

## There's a Reason They're Called Classic!

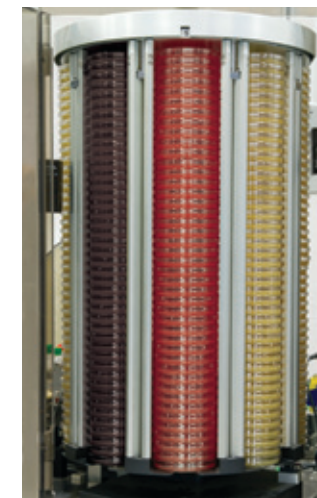
**MICROBIOLOGY LAB STAFF** have been reading the same classic streak patterns for years. A different type of pattern caused by an overload of growth from too much sample or a circular streak pattern only means staff retraining. WASP®DT uses a library of classic streak patterns honed by years of expertise in reading plates. But if you've got a unique and special pattern, specific to your lab, don't worry! We can program WASP®DT for custom patterns!



**TECHNOLOGICAL INNOVATION** is nothing without human collaboration. That's why, from the first prototype to the most recent lab to adopt WASP®DT (almost 300 and counting!), we've solicited constant input from the Microbiology community. New modules and improvements are a direct result of roots in the Microbiology lab. After all who is more suited to understand the automation needs of the lab, than someone who works there?

## Automatically Open and Close Specimens and Perform all Specimen Processing Tasks in Between

**WASP®DT AUTOMATICALLY** opens the sample and recaps. In order to minimize user intervention, the WASP®DT is equipped with modules to perform all up front specimen processing including planting and streaking, Gram slide preparation, broth inoculation, Kirby- Bauer and ID disk application.



## Freedom to Choose

**WASP®DT HAS** a nine silo media carousel which can hold any manufacturer's plated media. We don't make media. And we are not going to lock you into any one manufacturer's type.

## How Do You Know the Sample was Plated?

**AUTOMATIC LOOP CHECK GUARANTEES** delivery of sample onto the culture plate, as well as the integrity and accuracy of the loop. If the sample is not visible in the loop, WASP®DT makes two more attempts to collect sample and if the quantity is insufficient, the sample is sent to a rejection bin making QNS samples easy to find.



Plant and Streak



Automatically Uncap



Prepare and Label Gram Slide



Inoculate Enrichment Broths

## Standard Swabs and Solid Samples

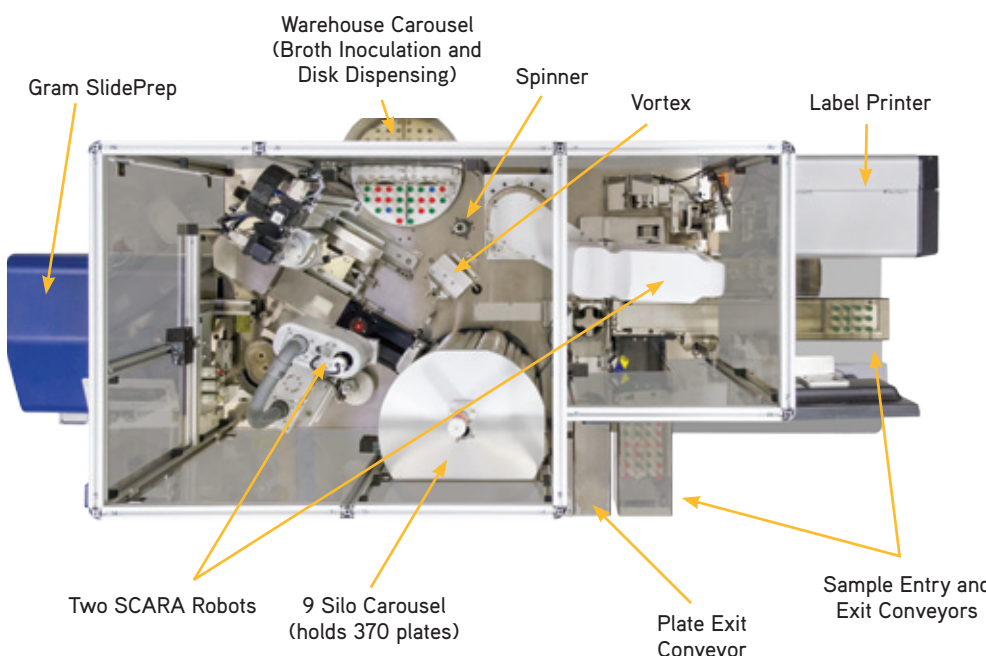
**WHILE WE STRIVE** for a liquid based specimen approach in the Microbiology lab with products like ESwab™, Snot Buster and FecalSwab™, we know that sometimes solid samples and wound swabs can't be avoided. WASP®DT is easily programmed to handle these with minimal interaction using the Streak Only Mode.



# WASP®DT: Walk-Away Specimen Processor

## Standard Linear Bench Top Design and Individual Specimen Handling

**THE WASP®DT IS DESIGNED** like a standard Microbiology bench. To eliminate the risk of cross contamination, specimens are handled one at a time and there are no racks of open containers.



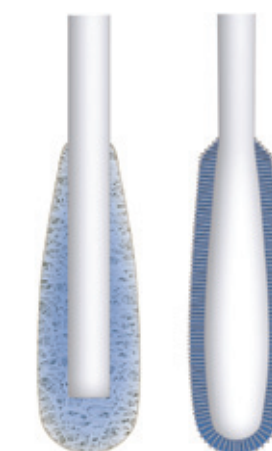
## A TOTAL SOLUTION FOR PRE-ANALYTICAL MICROBIOLOGY SPECIMEN PROCESSING.



**BY MAINTAINING A CLOSE RELATIONSHIP** with the Microbiology community, COPAN continues to make innovative strides and has designed WASP®DT as an open platform, modular instrument for the seamless addition of new features and capabilities.

# Innovating Together

**FOR OVER 30 YEARS** COPAN has had its feet planted in the Microbiology lab and its eyes facing the future. The changes facing Microbiologists, Lab Techs, Doctors, Nurses and Hospital administration are many, and without the right partner these changes can be overwhelming. The COPAN philosophy is one of collaboration with the community that our products serve in order to maintain the highest level of quality, efficiency and innovation.



Traditional Fiber Wound Swab

Flocked Swab

## Swabs: Past and Present

**THE FIRST ACCOUNT** of the use of a swab for collecting samples from patients was in 1893 and until recently, little had been done to improve on what was thought to be working. Enter COPAN flocked swabs, FLOQSwabs™. In contrast to traditional fiber wound swabs flocked swabs are created by spraying a carpet of short nylon fiber strands onto the tip of a plastic applicator creating an absorbent layer. The entire sample stays close to the surface for fast and complete elution of the sample when placed in liquid medium or elution buffer. Flocked swabs mean a better sample and have allowed for the automation of one of the more challenging Microbiology samples.

## ESwab™ and FecalSwab™

**COPAN ESWAB™ AND FECALSWAB™** comprise of a flocked swab and Liquid Amies or Cary-Blair medium. ESwab™ is a multipurpose, open platform collection and preservation system that maintains aerobic, anaerobic and fastidious bacteria for up to 48 hours at refrigerator and room temperature. FecalSwab™ is a universal transport system for enteric diagnostics suited to traditional culture and molecular assays. ESwab™ and FecalSwab™ are the transport swab systems which allow for fully automated specimen processing.



## Liquid Based Microbiology (LBM) Philosophy

**GONE ARE THE DAYS** when specimen processors were expected only to process urine samples! COPAN's liquid based approach transforms solid, semi-solid and viscous samples into a liquid format and allows for the maximum utilization of WASP®DT. With the ability to run almost all specimens that are sent to Microbiology, labs realize a faster return on investment.

COPAN's Liquid Based Microbiology (LBM) line includes ESwab™ for swabs, FecalSwab™ which allows for the quick and easy processing of stool specimens, and SnotBuster™ (SL Solution) for easier sputum processing, as well as a line of enrichment broths which can be processed using automation.



# Global Placements



● **WASP®**  
● **WASPLAB™**



For more information visit [COPANUSA.com](http://COPANUSA.com)

COPAN Diagnostics, Inc. • 26055 Jefferson Avenue • Murrieta, CA 92562 USA